

# COMPACTORS

## Stationary Compactor RP-200 thru RP-400



RP-300 SHOWN

### FEATURING:

- UL Listed Relay Control Box
- Electrical Motor - TEFC (Tri-Voltage)
- Meets ANSI Standards
- Controls: Push button start, dead man/hand key switch, forward-reverse selection switch, mushroom emergency stop, 80% / 100% container full light and manual override all standard
- Grease Fittings (2 per side)
- All compactors are primed and painted in one of 13 standard colors
- Oil Level Site Gauge with Thermometer
- Operator Controls with 15' Sealtite
- Hydraulic Power Unit mounted internally (RP-200 and RP-300 Only)
- Options Available

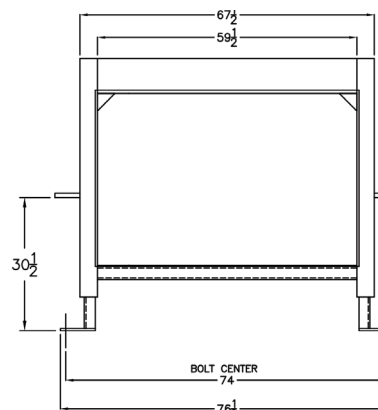
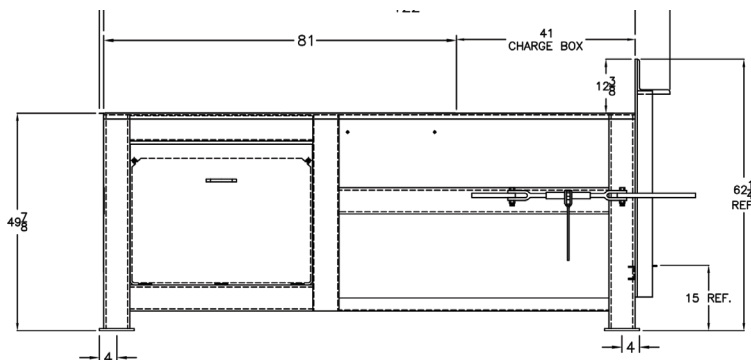
**ALL PRODUCTS ARE BUILT RUDCO TOUGH IN THE USA**



**Rental Program And Financing Available**

Toll Free: 1.800.828.2234 • E-Mail: [sales@rudco.com](mailto:sales@rudco.com)

[www.rudco.com](http://www.rudco.com)



### **CHARGE BOX CAPACITY**

Manufacturers Rating: 2.00 CU. YD.  
Hopper Width: 60"  
Ram Height: 29-1/2"

Wastec Rating: 1.56 CU. Yd.  
Hopper Length: 41"  
Ram Penetration: 14"

### **RAM DETAILS**

3/8" Ram Face Plate w/ 4" x 3" x 3/8" Angle  
1/4" Ram Sides

3/8" Ram Bottom  
3/8" Ram Top

### **PACKER FABRICATION DETAILS**

1/2" Thick Charge Box Floor  
8" x 8" x 1" Breaker Bar Angle  
11 Gauge Top Cover

1/4" Packer Side W/ 6" Channel Side Stiffener  
6" Rear Mount Tube W/ 3/8" Wall  
3/8" Replaceable Wiper Blade

### **INTERNAL POWER UNIT - ELECTRICAL AND HYDRAULIC DETAILS**

10 HP Motor TEFC  
10.5 GPM Pump Capacity  
Single Cylinder System  
Normal Pressure: 1750  
Normal Ram Force: 49,480  
Normal Ram Force PSI: 27.0  
Cycle Time In Seconds\*: 63

NEMA 4-12 Control Panel, UL Rated  
25 Gallon Hydraulic Oil Tank W/ Site Gauge  
6" Bore x 3" Rod @ 56" Stroke  
Max Pressure @ 100% Light: 2,200  
Maximum Ram Force: 56,500  
Maximum Ram Force PSE: 31.9  
Cubic Yards Per Hour\*: 165

### **OPERATION DETAILS**

Push Button Starter, Automatic Cycle  
Turn Key Switch on 15' Cord  
Ram Retracts, Extends, Retracts And Stops Automatically

80% and 100% Full Light  
Override Pack Out Hydraulic Pressure Boost  
Dead Man Operation

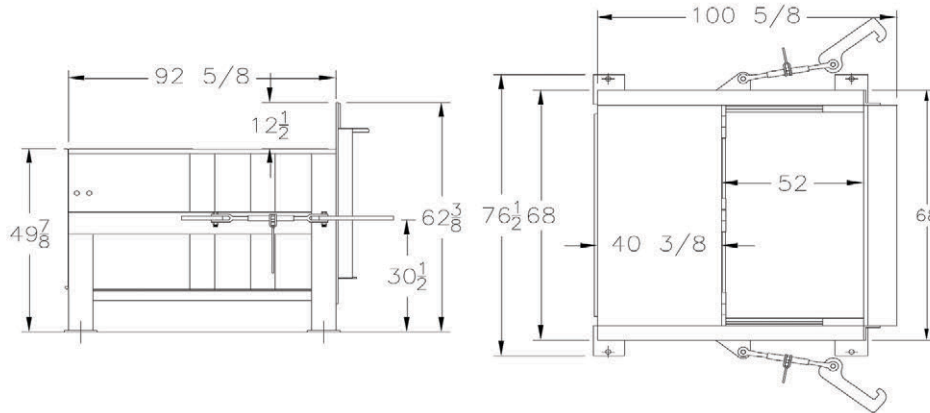
### **OPTIONAL EQUIPMENT**

Guide Rails  
Doghouse With A Door (40" x 44") On Each Side  
18" Hinged Dock Extension  
Oil Heater  
Low Oil Shutdown  
High Temp / Low Oil Shutdown

Hopper 45° (Cellar Type) With Doors  
Multi Cycle Timer  
Colored Pressure Gauge  
Remote Power Unit W/ Full Cover  
Automatic Cycle With Safety Interlock  
Full, Rear, Side Feed Hopper

\*Engineering Calculation - Cycle time and Cubic Yards per hour may vary per condition

\*\* For automatic cycle, compactor must meet ANSI Standards Z245.2-2008 and Z245.21-2008

**CHARGE BOX CAPACITY**

Manufacturers Rating: 2.25 CU. YD.  
Hopper Width: 60"  
Ram Height: 29-1/2"

Wastec Rating: 1.90 CU. Yd.  
Hopper Length: 52"  
Ram Penetration: 10"

**RAM DETAILS**

3/8" Ram Face Plate w/ 4" x 3" x 3/8" Angle  
1/4" Ram Sides

3/8" Ram Bottom  
3/8" Ram Top

**PACKER FABRICATION DETAILS**

3/8" Thick Charge Box Floor  
8" x 8" x 1" Breaker Bar Angle  
11 Gauge Top Cover

1/4" Packer Side W/ 6" Channel Side Stiffener  
6" Rear Mount Tube W/ 3/8" Wall  
3/8" Replaceable Wiper Blade

**EXTERNAL POWER UNIT - ELECTRICAL AND HYDRAULIC DETAILS**

10 HP Motor TEFC  
10.5 GPM Pump Capacity  
Twin Cylinder System  
Normal Pressure: 1,750  
Normal Ram Force: 55,650  
Normal Ram Force PSI: 31.44  
Cycle Time In Seconds\*: 31

NEMA 12 Control Panel, UL Rated  
25 Gallon Hydraulic Oil Tank W/ Site Gauge  
4-1/2" Bore x 2-1/2" Rod @ 50" Stroke  
Max Pressure @ 100% Light: 2,200  
Maximum Ram Force: 69,960  
Maximum Ram Force PSE: 39.52  
Cubic Yards Per Hour\*: 220

**OPERATION DETAILS**

Push Button Starter, Deadman Control  
Turn Key Switch on 15' Cord  
Ram Retracts, Extends, Retracts And Stops Automatically

80% and 100% Full Light  
Override Pack Out Hydraulic Pressure Boost

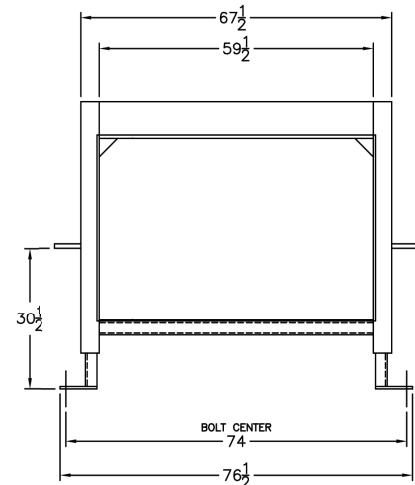
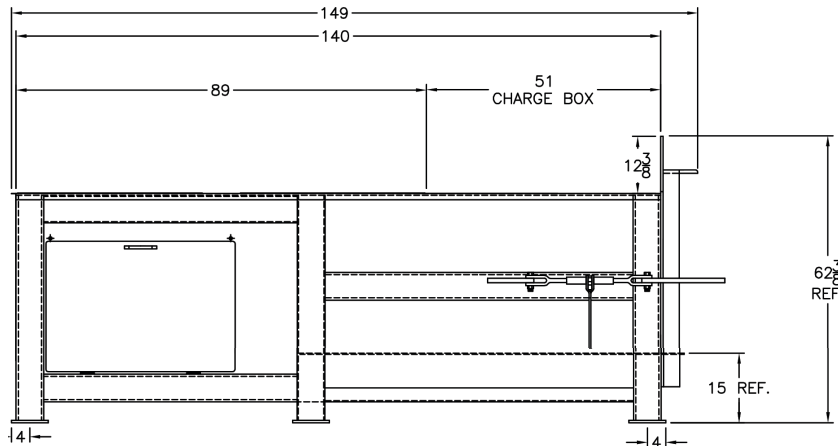
**OPTIONAL EQUIPMENT**

Guide Rails  
Doghouse With A Door (34" x 44") On Each Side  
Multi Cycle Timer  
Colored Pressure Gauge  
Hopper 45° (Cellar Type) With Doors

18" Hinged Deck Extension  
Oil Heater  
Automatic Cycle With Safety Interlock Switch  
Full, Rear, Side Feed Hopper

\*Engineering Calculation - Cycle time and Cubic Yards per hour may vary per condition

\*\* For automatic cycle, compactor must meet ANSI Standards Z245.2-2008 and Z245.21-2008



### **CHARGE BOX CAPACITY**

Manufacturers Rating: 3.00 CU. YD.  
Hopper Width: 60"  
Ram Height: 29-1/2"

Wastec Rating: 2.05 CU. Yd.  
Hopper Length: 51"  
Ram Penetration: 14"

### **RAM DETAILS**

3/8" Ram Face Plate w/ 4" x 3" x 3/8" Angle  
1/4" Ram Sides

3/8" Ram Bottom  
3/8" Ram Top

### **PACKER FABRICATION DETAILS**

1/2" Thick Charge Box Floor  
8" x 8" x 1" Breaker Bar Angle  
11 Gauge Top Cover

1/4" Packer Side W/ 6" Channel Side Stiffener  
6" Rear Mount Tube W/ 3/8" Wall  
3/8" Replaceable Wiper Blade

### **INTERNAL POWER UNIT - ELECTRICAL AND HYDRAULIC DETAILS**

10 HP Motor TEFC  
10.5 GPM Pump Capacity  
Single Cylinder System  
Normal Pressure: 1750  
Normal Ram Force: 49,480  
Normal Ram Force PSI: 27.0  
Cycle Time In Seconds\*: 78

NEMA 12 Control Panel, UL Rated  
25 Gallon Hydraulic Oil Tank W/ Site Gauge  
6" Bore x 3" Rod @ 66" Stroke  
Max Pressure @ 100% Light: 2,200  
Maximum Ram Force: 56,500  
Maximum Ram Force PSE: 30.9  
Cubic Yards Per Hour\*: 165

### **OPERATION DETAILS**

Push Button Starter, Automatic Cycle  
Turn Key Switch on 15' Cord  
Ram Retracts, Extends, Retracts And Stops Automatically

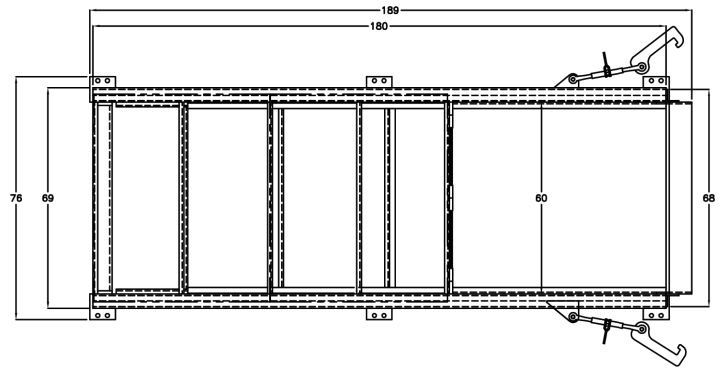
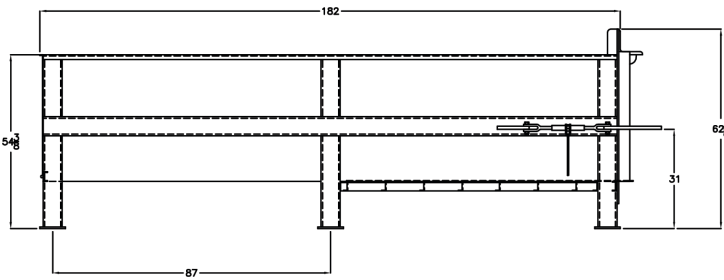
80% and 100% Full Light  
Override Pack Out Hydraulic Pressure Boost  
Dead Man Operation

### **OPTIONAL EQUIPMENT**

Guide Rails  
Doghouse With A Door (40" x 44") On Each Side  
18" Hinged Dock Extension  
Oil Heater  
Remote Power Unit W/ Full Cover  
Low Oil Shutdown  
High Temp / Low Oil Shutdown

Hopper 45° (Cellar Type) With Doors  
Automatic Cycle With Safety Interlock Switch  
Multi Cycle Timer  
Colored Pressure Gauge  
Full, Rear, Side Feed Hopper





### **CHARGE BOX CAPACITY**

Manufacturers Rating: 3.44 CU. YD.  
Hopper Width: 60"  
Ram Height: 34"

Wastec Rating: 3.00 CU. Yd.  
Hopper Length: 69"  
Ram Penetration: 13"

### **RAM DETAILS**

1/2" Ram Face Plate w/ 4" x 3" x 3/8" Angle  
1/4" Ram Sides

3/8" Ram Bottom  
1/4" Ram Top

### **PACKER FABRICATION DETAILS**

1/2" Thick Charge Box Floor  
8" x 8" x 1" Breaker Bar Angle  
11 Gauge Top Cover

1/4" Packer Side W/ 6" Channel Side Stiffener  
6" Rear Mount Tube W/ 3/8" Wall  
3/8" Replaceable Wiper Blade

### **EXTERNAL POWER UNIT - ELECTRICAL AND HYDRAULIC DETAILS**

15 HP Motor TEFC  
14 GPM Pump Capacity  
Single Cylinder System  
Normal Pressure: 1750  
Normal Ram Force: 49,480  
Normal Ram Force PSI: 24.3  
Cycle Time In Seconds\*: 60

NEMA 4-12 Control Panel, UL Rated  
60 Gallon Hydraulic Oil Tank W/ Site Gauge  
6" Bore x 4-1/2" Rod @ 80" Stroke  
Max Pressure @ 100% Light: 2,200  
Maximum Ram Force: 56,500  
Maximum Ram Force PSE: 27.7  
Cubic Yards Per Hour\*: 310

### **OPERATION DETAILS**

Push Button Starter, Automatic Cycle  
Turn Key Switch on 15' Cord  
Ram Retracts, Extends, Retracts And Stops Automatically

80% and 100% Full Light  
Override Pack Out Hydraulic Pressure Boost  
Dead Man Operation

### **OPTIONAL EQUIPMENT**

Guide Rails  
Doghouse With A Door (40" x 44") On Each Side  
Hinged Dock Extension  
Oil Heater  
Low Oil Shutdown

Hopper 45° (Cellar Type) With Doors  
Multi Cycle Timer  
Colored Pressure Gauge  
Full, Rear, Side Feed Hopper  
Hi-Temp / Low Oil Shutdown

\*Engineering Calculation - Cycle time and Cubic Yards per hour may vary per condition

\*\* For automatic cycle, compactor must meet ANSI Standards Z245.2-2008 and Z245.21-2008