

COMPACTORS

Apartment Compactors



RUDCO APARTMENT COMPACTOR WITH 2 CU. YD. CONTAINER

Key Features:

- Photo Electric Eye to Start and Stop Compaction Automatically When Trash is Sensed
- 100% Full Light to Show Easily When Compactor is Full
- Ground Loading Access Door
- 5HP Motor
- Painted One of 13 Standard Colors

THE PERFECT RESIDENTIAL COMPACTOR:

Rudco Apartment Compactors are specifically designed for compaction of general trash in residential settings. If your apartment complex generates 12 cu. yards of un-compacted trash per day, the addition of an apartment compactor could reduce labor costs and disposal fees by reducing the required number of pickups by collection services. In addition, our Apartment Compactors help control pests/scavenging by rodents, reduce odor problems, better contain discarded personal information. Reduce costs, beautify your property, and create a cleaner, more pleasant refuse collection area!

The Rudco Apartment Compactors meet all ANSI and OSHA standards and are fully UL Compliant.

ALL PRODUCTS ARE BUILT RUDCO TOUGH IN THE USA

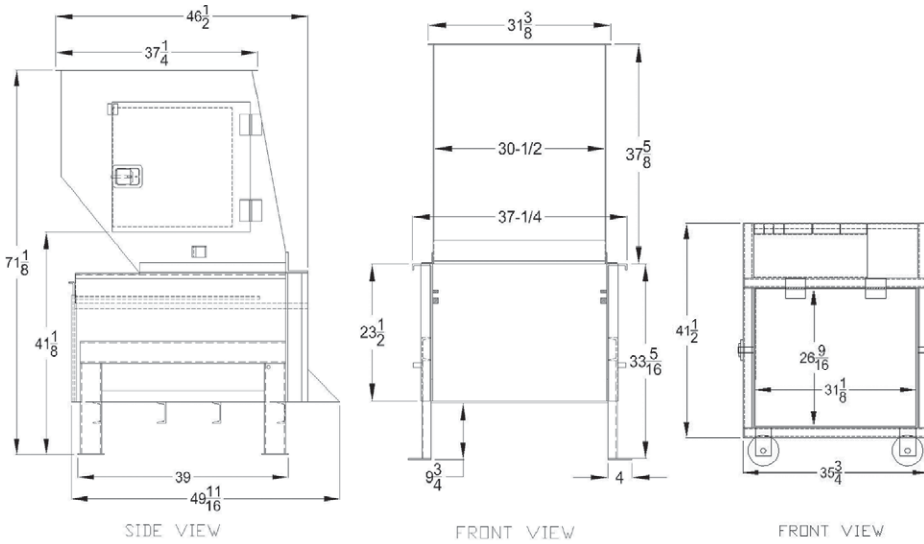


Rental Program And Financing Available

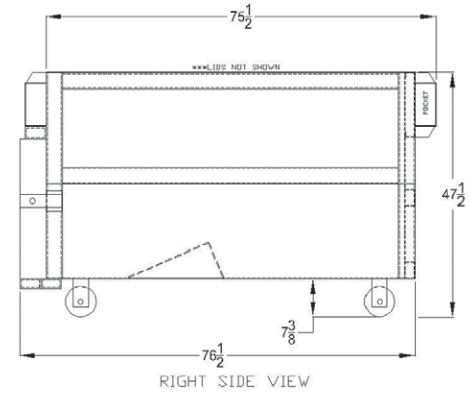
Toll Free: 1.800.828.2234 • E-Mail: sales@rudco.com

www.rudco.com

COMPACTOR DIMENSIONS



2 YD. CONTAINER DIMENSIONS



CHARGE BOX CAPACITY	
Manufacturers Rating	.34 CU. YD.
Hopper Width	30"
Ram Height	16 3/4"
Wastec Rating	.28 CU. YD.
Hopper Length	26 5/8"
Ram Penetration	6"
RAM DETAILS	
Ram Face Plate	3/8"
Ram Sides	1/4"
Ram Bottom	3/8"
Ram Top	3/8"
PACKER FABRICATION DETAILS	
Charge Box Floor	1/4" Thick
Breaker Bar Angle	4" x 4" x 1/2"
Top Cover	1/4"
Packer Sides	1/4"
Packer Sides Channel Stiffener	4"
Wiper Blade	3/8"

INTERNAL POWER UNIT/ ELECTRIC/HYDRAULIC DETAILS	
Motor	5 HP
Pump Capacity	4 GPM
Cylinders	(2)
Normal Pressure	1,600
Normal Ram Force (lbs.)	13,800
Normal Ram Force (PSI)	34.5
Cycle Time	20 Sec.
NEMA 12 Control Panel	UL Rated
Hyd. Oil Tank W/ Site Gauge	15 Gal.
Cylinder Bore	2 1/2"
Cylinder Stroke	20"
Max. Pressure 100% Light	1,800
Max. Ram Force (lbs.)	16,800
Max Ram Force (PSI)	39.4
Cubic Yards Per Hour	66

RUDCO RESERVES THE RIGHT TO REVISE, AMEND AND IMPROVE IT'S EQUIPMENT WITHOUT NOTICE

CONTAINER SPECIFICATIONS

- 10 GA. Floor
- 10 GA. Sides
- Formed Channel
- 7 GA. Pick-up Pockets for Front Load Trucks
- 6" Casters With Quick Change Pads
- 10 GA. Steel Lids

OPERATIONAL DETAILS

- Photo-Eye Actuated Control With Safety Interlock Switch
- 100% Full Light
- Standard Side Feed and/or Top Feed Hopper
- Stand Alone Power Unit
- Ram Retracts, Extends, Retracts And Stops Automatically

OPTIONAL EQUIPMENT

- 3 Cu. Yard Can
- Available in Front Load or Rear Load

CORPORATE OFFICE: 114 E. Oak Rd. • Vineland, NJ 08360 • Ph: 1.856.691.0800 • Fax: 1.856.696.8654

MAILING ADDRESS: P.O. Box 705 • Vineland, NJ 08362

Toll Free: 1.800.828.2234 | E-Mail: sales@rudco.com
Phone: 1.856.691.0800 | Fax: 1.856.696.8654

rudco.com