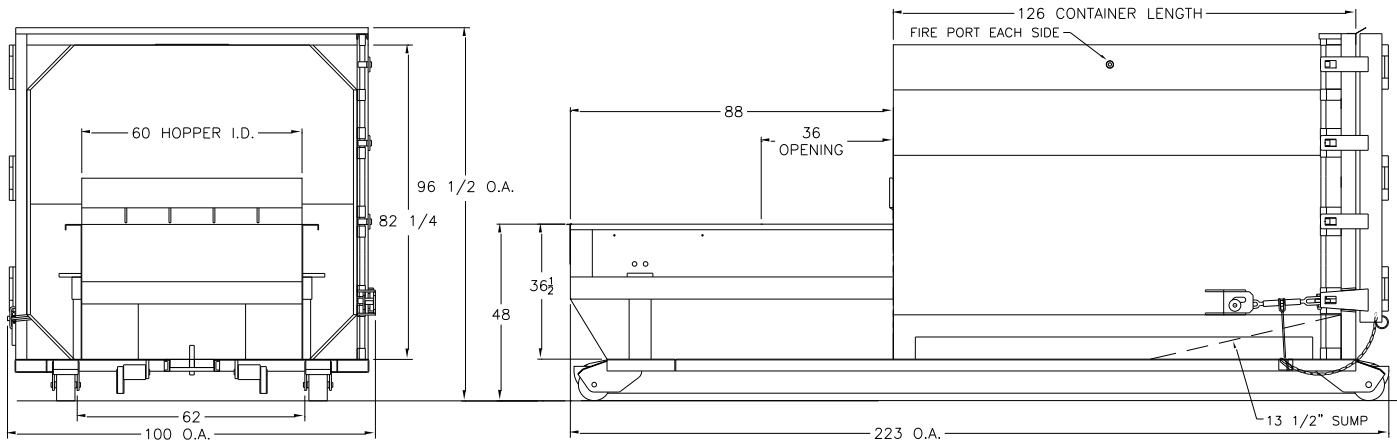


Self Contained Compactor - 20 Cubic Yards Model RT-2000



CHARGE BOX CAPACITY

Manufacturers Rating:	2.0 CU. YD.	Wastec Rating:	1.36 CU. YD.
Hopper Width:	60"	Hopper Length:	36"
Ram Height:	29 1/2"	Ram Penetration:	6"

RAM DETAILS

3/8" Ram Face Plate w/ 4" x 3" x 3/8" Angle	1/4" Ram Bottom
1/4" Ram Sides	1/4" Ram Top

PACKER FABRICATION DETAILS

3/8" Thick Charge Box Floor	1/4" Packer Side w/ 6" Channel Side Stiffener
6" x 6" x 1" Breaker Bar Angle	60" Rear Cyl Mount with Dual 1" x 6" Flat Bar
11 Gauge Top Cover	3/8" Replaceable Wiper Blade

ELECTRICAL AND HYDRAULIC DETAILS

10 HP Motor TEFC	NEMA 12 Control Panel, UL Rated		
10.5 GPM Pump Capacity	25 Gallon Hydraulic Oil Tank		
Single Cylinder System	5" Bore x 2 1/2" Rod @ 42" Stroke		
Normal Pressure:	1750	Max Pressure @ 100% Light:	2,000
Normal Ram Force:	34,350	Maximum Ram Force:	39,260
Normal Ram Force PSI:	19.4	Maximum Ram Force PSI:	22.2
Cycle Time In Seconds:	30	Cubic Yards Per Hour:	163

OPERATION DETAILS

Self Contained Compactor - 20 Cubic Yards Model RT-2000



Push Button Starter, Automatic Cycle
Turn Key Switch on 15' Cord
Ram Retracts, Extends, Retracts And Stops Automatically
Deadman Operation

Remote Power Unit With Full Power Unit Cover
80% and 100% Full Lights
Override Pack Out Hydraulic Pressure Boost

DECK DETAILS

3/16" Floor
1/4" x 6" x 2" Main Rails
18" Channel Spacing
1" Hook Plate 7 11/16" x 12" (A-36)

Double End Pick Up
Gusset every cross channel
8" x 5" Extra Heavy Duty In-Line Wheels
1 1/4" Hook 8" x 9 1/2" (A-36)

CONTAINER DETAILS

20 Cubic Yard Capacity
2" Taper Front to Back
Rear Door 3/16" with 6" X 2" Tube

3/16" Sides, Front and Roof
Water Tight Compactor/Container
Replaceable Gasketed Rear Door

OPTIONAL EQUIPMENT

Guide Rails
Doghouse with a Door (40" x 44") on each side
18" Hinged Dock Extension
Oil Heater
Full, Rear, Side Feed Hopper

Hopper 45 ° (Cellar Type) with Doors
Multi Cycle Timer
Colored Pressure Gauge
Gate, Handrails

*Engineering Calculation – Cycle time and Cubic Yards per Hour may vary per conditions.

**For automatic cycle, compactor must meet ANSI Standards Z245.2-2008 and Z245.21-2008.