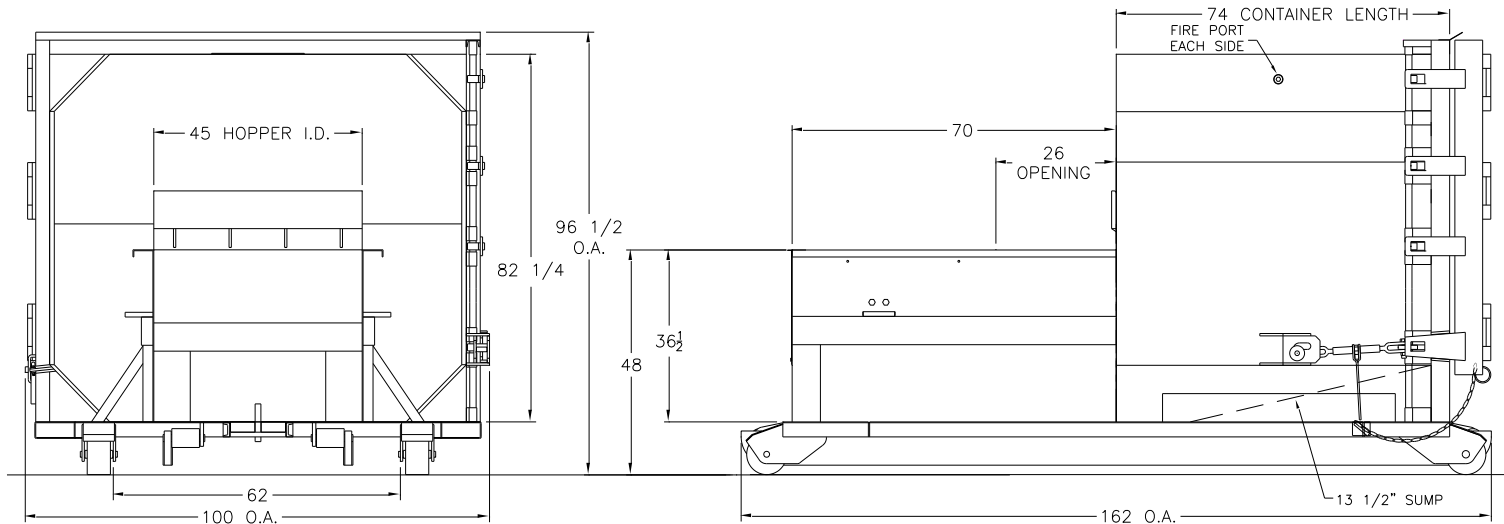


Self Contained Compactor – 10 Cubic Yards Model RT-1000



CHARGE BOX CAPACITY

Manufacturers Rating:	1 CU. YD.	Wastec Rating:	0.74 CU. YD.
Hopper Width:	45"	Hopper Length:	26"
Ram Height:	29 1/2"	Ram Penetration:	6"

RAM DETAILS

3/8" Ram Face Plate w/ 4" x 3" x 3/8" Angle	1/4" Ram Bottom
1/4" Ram Sides	1/4" Ram Top

PACKER FABRICATION DETAILS

3/8" Thick Charge Box Floor	1/4" Packer Side w/ 6" Channel Side Stiffener
6" x 6" x 1" Breaker Bar Angle	Dual 6" x 45" Rear Mount Channel
11 Gauge Top Cover	3/8" Replaceable Wiper Blade

ELECTRICAL AND HYDRAULIC DETAILS

5 HP Motor TEFC	NEMA 12 Control Panel, UL Rated
5.2 GPM Pump Capacity	25 Gallon Hydraulic Oil Tank
Single Cylinder System	4" Bore x 2.5" Rod @ 30.88" Stroke
Normal Pressure:	1,500
Normal Ram Force:	18,855
Normal Ram Force PSI:	14.2
Cycle Time In Seconds:	28
	Max Pressure @ 100% Light: 1,750
	Maximum Ram Force: 22,000
	Maximum Ram Force PSI: 16.6
	Cubic Yards Per Hour: 95.1

OPERATION DETAILS

Self Contained Compactor – 10 Cubic Yards Model RT-1000



Push Button Starter, Automatic Cycle
Turn Key Switch on 15' Cord
Ram Retracts, Extends, Retracts And Stops Automatically
Deadman Operation

Override Pack Out Hydraulic Pressure Boost
80% and 100% Full Lights
Remote Power Unit With Full Power Unit Cover

DECK DETAILS

3/16" Floor
1/4" 6" x 2" Main Rails
18" Channel Spacing
1" Hook Plate 7 11/16" x 12" (A-36)

Double End Pick Up
Gusset every cross channel
8" x 5" Extra Heavy Duty In-Line Wheels
1 1/4" Hook 8" x 9 1/2" (A-36)

CONTAINER DETAILS

10 Cubic Yard Capacity
2" Taper Front to Back
Rear Door 3/16"

3/16" Sides, Front and Roof
Water Tight Compactor/Container
Replaceable Gasketed Rear Door

OPTIONAL EQUIPMENT

Guide Rails
Doghouse with a Door (28" x 44") on each side
18" Hinged Dock Extension
Oil Heater
Gate, Handrails

Hopper 45 ° (Cellar Type) with Doors
Multi Cycle Timer
Colored Pressure Gauge
Full, Rear, Side Feed Hopper

*Engineering Calculation – Cycle time and Cubic Yards per Hour may vary per conditions.

**For automatic cycle, compactor must meet ANSI Standards Z245.2-2008 and Z245.21-2008.